

Photometric Report



General Information

Report No. RN-150806-7
Test date 2015-08-06
Operator mwHan
Temperature 22.6 °C
Test Name 150806_FT-SL-15-F
Description

Sample Information

Measuring Distance 25.00 m
C (°) 0° ~ 350° / 10.0°
γ (°) 0° ~ 90° / 0.5°

Electric Properties

Voltage 24.00 V
Current 5.892 A

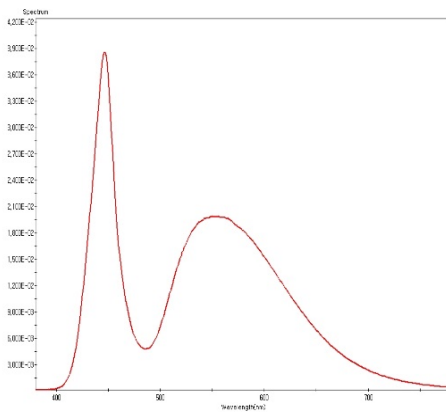
Photometric

Total Luminous Flux 9215.73 lm
Luminance Efficiency 65.17 lm/W
Max. Intensity 12705.17 cd

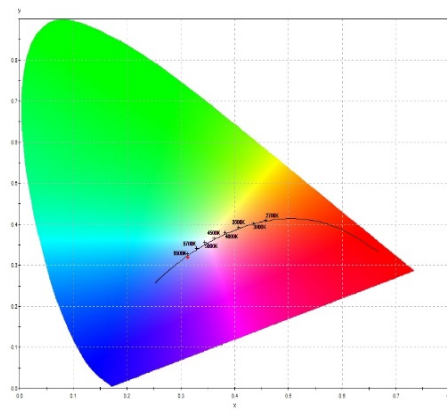
Colorimetric

x (CIE 1931) 0.313
y (CIE 1931) 0.3197
Color Temperature 6567.2 k

Spectrum



Color Coordinate



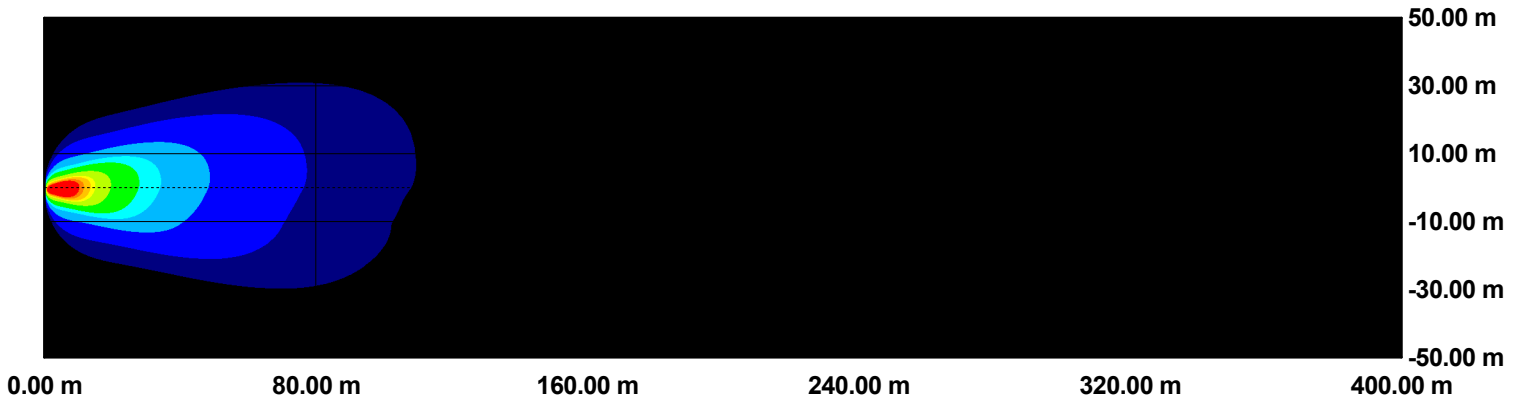
Report Number:

Report Date:

Part Name: *FT-SL-15-F*
Part Number:
Model:

Customer:
Emax (Lux): 296.93
Coordinate: 4.104, 0.085

FT-SL-15-F



Illuminance Type: *Perpendicular*
Test Item Tilt Angle (?): 0.000

Test Item Height (m): 1.700
Test Item Offset from Road Centre (m): 0.600

Tested By: _____ Checked By: _____ Approved By: _____