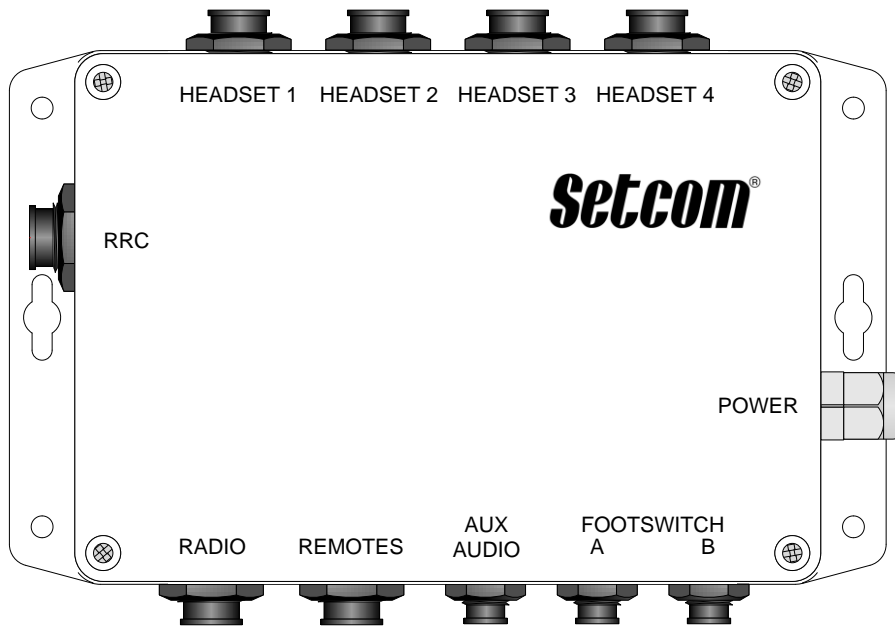


IM-977

INSTALLATION AND USERS GUIDE



Questions or technical issues? Please call:

TECH SUPPORT: 650-965-8020 ext. 703

Setcom[®]
CORPORATION

3019 Alvin DeVane Blvd.
Ste. 560
Austin, TX 78741
Phone: (650) 965-8020

The IM-977 is a Waterproof Radio Interface and full-duplex Intercom with the following features:

- Single Radio Interface, Fully Adjustable RX/TX levels, use with RCB or RC cable types
- 4 Radio Transmit Circuits, TRS Headset Jacks (extension TX station RS-960 is available)
- Remotes Port for Up to 4 Intercom-Only Positions
- 2 PTT Footswitch or Pushbutton Station Ports:
A: assignable to HS1 or HS2
B: assignable to HS3 or HS4
(Footswitch is FS-950, Pushbutton is PBS-950)
- AUX Audio Input (requires 25-0088 cable) (see notes on page 3)
- Automatic AUX Muting on PTT or Radio RX, 3-second delayed recovery from AUX Mute (either PTT or RX mute function can be turned off)
- Fully Isolated DC Power for Noise Immunity, operates on 12 to 24 Volts DC
- TX Audio PTT Lockout, only 1 user can transmit at any time, and only that users' voice is sent to radio
- Can connect to 2 radios with RRC-950 (requires 25-0108 cable)

IM-977 Typical Installation

Radio, Headsets, and Power

Refer to the 900W4-Base instructions, or the RS-960 User Guide for more information on those products, such as required cables and general installation notes.

If 2 radios are required, a Setcom RRC-950 can be connected to the RRC Jack. Refer to the RRC-950 User Guide for more information.

Mount the IM-977 using the 4 small mounting holes or the 2 larger holes on the enclosure flanges. Mounting screws are supplied by user.

Questions or technical issues? Please call:

TECH SUPPORT: 650-965-8020 ext. 703

Setcom[®]
CORPORATION

3019 Alvin DeVane Blvd.
Ste. 560
Austin, TX 78741
Phone: (650) 965-8020

TX Headsets can be plugged into any of the headset jacks. A 900W4-Base wireless base station, or an RS-960 Remote Transmit Station, can also be plugged in to any of the headset jacks.

CSB-970x or
other TX
Headset with
Conxall plug

DC Power Cable

RED = +V

GREEN = GROUND

Connect the DC Power cable to a 12 to 24 VDC power connection. The IM-950 has an internal 1A ATO fuse, but it is recommended to connect the unit to a fused power source.

RC or RCB
Radio Cable

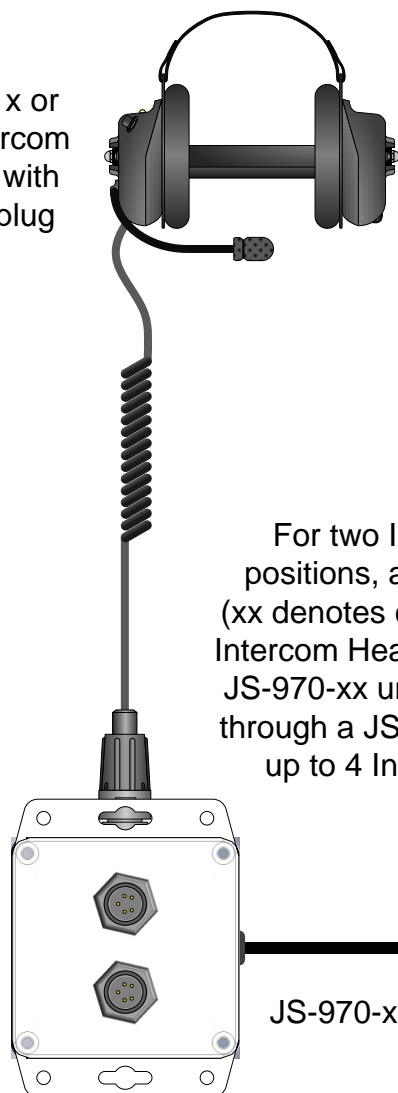
Mobile Radio

Radio Cable part number is determined by radio manufacturer, model number, and length of cable.

IM-977 Typical Installation

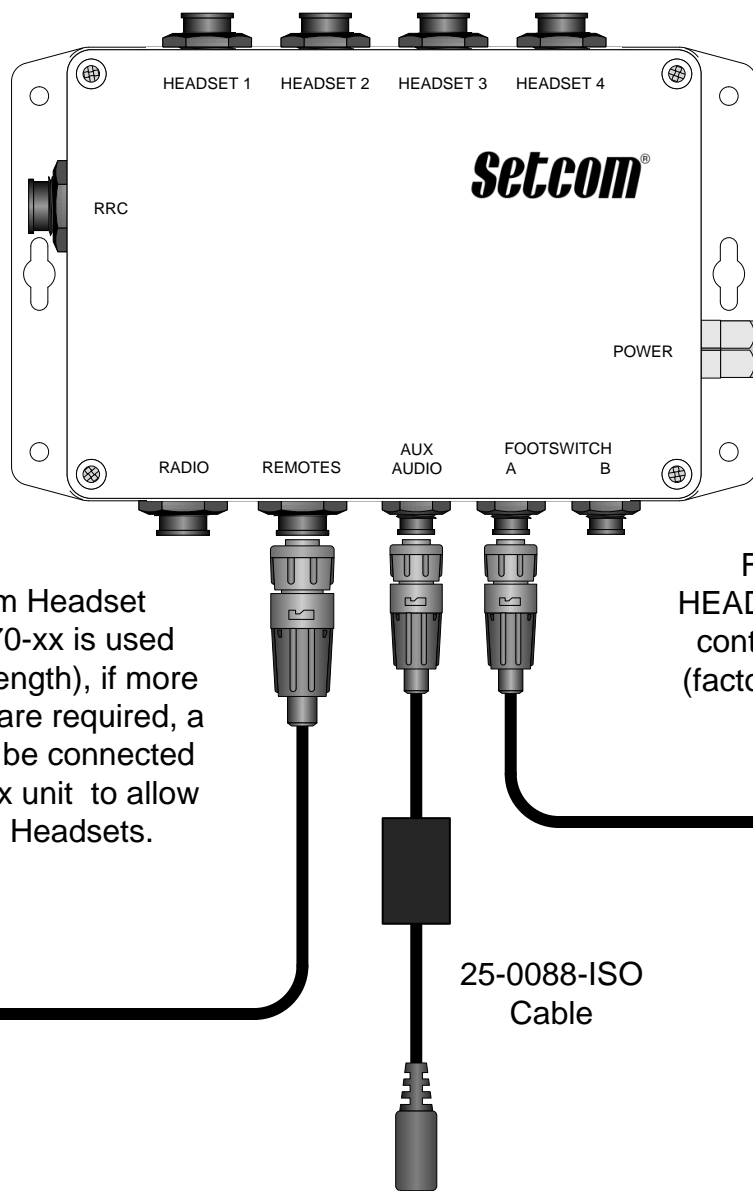
Remotes, Aux Audio, and
PTT Footswitches

CSB-971x or
other Intercom
Headset with
Conxall plug



For two Intercom Headset positions, a JS-970-xx is used (xx denotes cable length), if more Intercom Headsets are required, a JS-970-xx unit can be connected through a JS-971-xx unit to allow up to 4 Intercom Headsets.

JS-970-xx



1 or 2 Footswitches or
Pushbutton PTT stations can
be connected to the IM-977.

Footswitch input A can control either
HEADSET 1 or HEADSET 2, and input B can
control either HEADSET 3 or HEADSET 4.
(factory defaults are input A set to Headset 1
and input B set to HEADSET 3).

25-0088-ISO
Cable

FS-950 PTT Footswitch
(Pushbutton PTT switch
PBS-950 option is available)

NOTE:

The AUX AUDIO input is not intended for use as an additional radio receive input, it will not support BTL-type (Balanced) speaker outputs from radios.

It will support mono or stereo Single-Ended line level audio such as that from an audio device headphone output, or certain types of radios with Single-Ended audio out such as a scanner.

If there are questions, consult Setcom Tech Support.

An Auxiliary Audio source such as an MP3 player or a portable CD player can be connected to the IM-977 through use of the 25-0088-ISO Cable and a 3.5mm male-to-male patch cable (user supplied). Volume is controlled by the Audio source.

Questions or technical issues? Please call:

TECH SUPPORT: 650-965-8020 ext. 703

Setcom®
CORPORATION

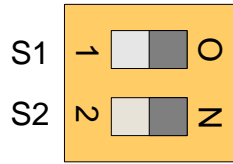
3019 Alvin DeVane Blvd.
Ste. 560
Austin, TX 78741
Phone: (650) 965-8020

IM-977 Adjustments

RX Audio, Muting Control

Loosen top cover screws and carefully remove cover to make adjustments

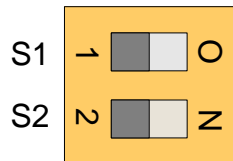
RX RANGE
SW4
(shown enlarged)



OFF \longleftrightarrow ON

- To increase RX Level, set S1 to ON
- To decrease RX level, set S2 to ON
- Do not set both sections to ON, use only one section or the other

MUTING CONTROL
SW2
(shown enlarged)



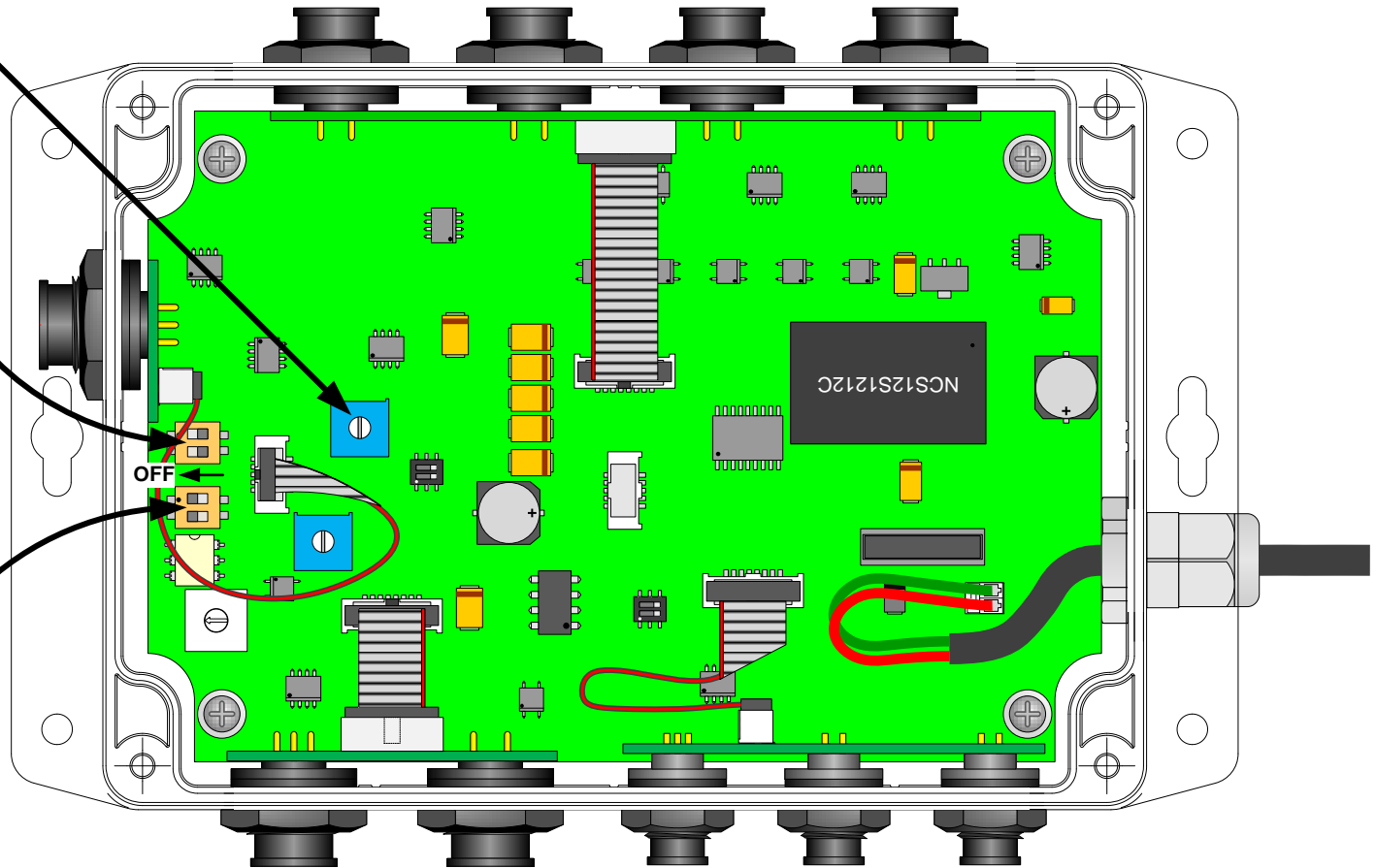
OFF \longleftrightarrow ON

Normally, muting control is factory preset to mute Aux Audio when either a PTT button is pressed, or when RX audio from a radio is detected.

- To turn off RX muting set S1 to OFF
- To turn off PTT muting set S2 to OFF

RX LEVEL
VR1
RX RANGE
SW4

MUTING
CONTROL
SW2



RX Audio level is normally set by the volume control on the mobile radio. If further adjustment is needed, RX LEVEL control VR1 can be used to adjust RX volume.

If more adjustment range is needed, the RX RANGE switch SW4 can be set to allow higher or lower level settings.

Questions or technical issues? Please call:

TECH SUPPORT: 650-965-8020 ext. 703

Setcom
CORPORATION

3019 Alvin DeVane Blvd.
Ste. 560
Austin, TX 78741
Phone: (650) 965-8020

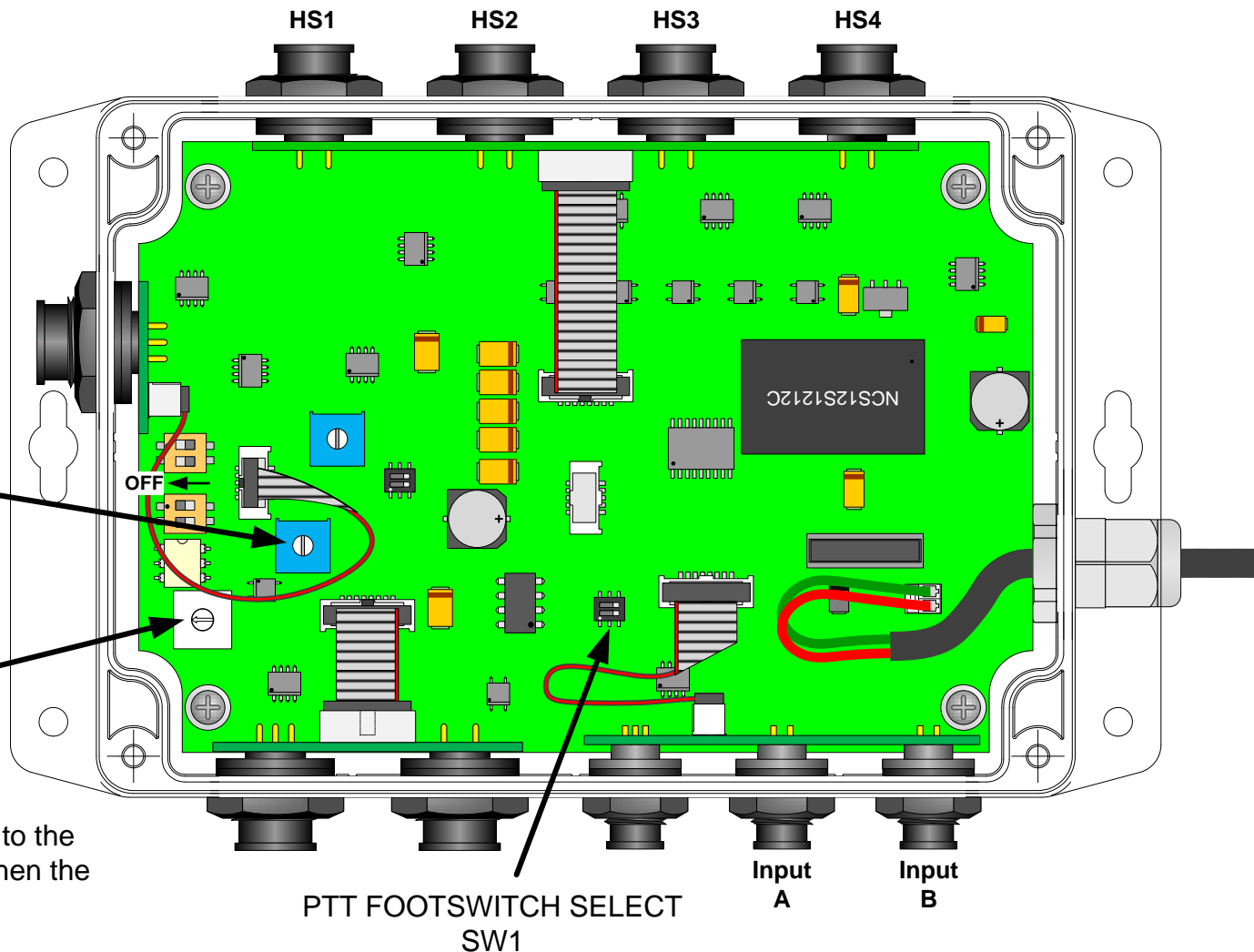
IM-977 Adjustments

TX Level, PTT Footswitch Control

Loosen top cover screws and carefully remove cover to make adjustments

For Factory Calibration
DO NOT ADJUST

TX LEVEL
SW5



TX Audio level is normally factory-preset to the correct level for the radio type specified when the IM-977 is ordered.

If a different TX level is required, the TX LEVEL SW5 can be set from 0 (highest) to F (lowest) to accommodate various radios.

Call Setcom Tech Support for assistance if needed.

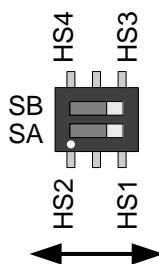
Questions or technical issues? Please call:

TECH SUPPORT: 650-965-8020 ext. 703

Setcom
CORPORATION

3019 Alvin DeVane Blvd.
Ste. 560
Austin, TX 78741
Phone: (650) 965-8020

FOOTSWITCH SELECT
SW1
(shown enlarged)



PTT Footswitch assignment can be set using SW1. The factory default is to assign input A to HEADSET 1 and input B to HEADSET 3.

These settings can be changed as follows:

- Input A can be changed to HEADSET 2 by setting SA to HS2
- Input B can be changed to HEADSET 4 by setting SB to HS4