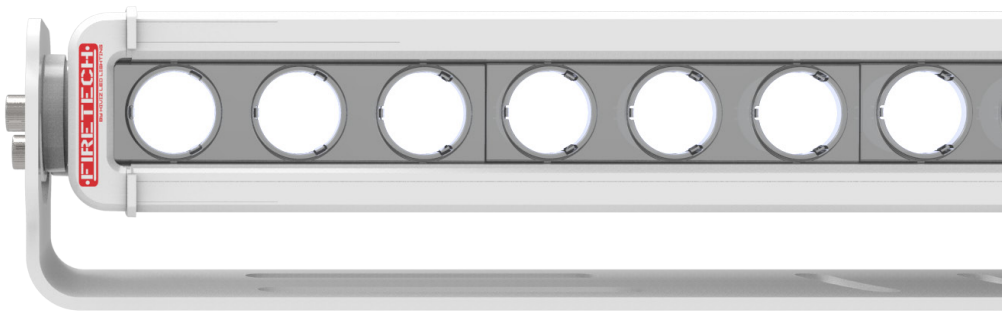




# MINIBROW LIGHT INSTRUCTION MANUAL

## FireTech MiniBrow Trunnion Light

FT-MB-3-\*\*-\* to FT-MB-39-\*\*-\* models



HiViz LED Lighting  
HiViz Lighting, Inc  
Phone: 703-662-3458  
Email: [firetech@hizizleds.com](mailto:firetech@hizizleds.com)  
PO Box 565, Naples, NC 28760



# TABLE OF CONTENTS

**Safety Regulations & Warranty .....3**

**MiniBrow Trunnion: What’s Included .....4**

**Technical Specifications .....5**

**Old and New System.....6-7**

**Installation Instructions .....8**

**Wiring Information .....9**

**Accessories and Replacement Parts .....10**

**References .....11**



# SAFETY NOTICE & WARRANTY

**WARNING: INSTALLATION MUST BE CONDUCTED BY A QUALIFIED TECHNICIAN.**

**IMPROPER INSTALLATION CAN RESULT IN INJURY OR DEATH.**

- Installation must be conducted by a qualified automotive electrician or emergency vehicle technician in accordance with the applicable NFPA standard(s) and procedures (Including but not limited to NFPA 1901, 1906, 1911, 414, 1900)
- Improperly installed, aimed, or operated lights can create significant hazard to motorists which can result in collision. Ensure light fixtures are installed and operated such that their beam does not shine into oncoming traffic
- All circuits must be fused at 125% of the rated power consumption of the loads on the circuit
- A voltage drop greater than 10% in the power feed to a fixture could be an indicator of an under-sized conductor. Use of improperly sized conductors will, at a minimum, result in poor performance, and at a maximum could result in fire
- Verify input voltage is within fixture range before installation. Voltage range information can be found in this manual or printed on the fixture body
- The use of personal protective equipment (safety glasses and gloves) is highly recommended
- Allow proper cooling time before handling the fixture if it has been installed & powered to prevent burns
- Any modifications to the fixture will void warranty and are not authorized by the manufacturer
- Always inspect the fixture for any damage prior to installing and DO NOT install if any damage is present



**PLEASE READ ALL INSTRUCTIONS BEFORE INSTALLATION**

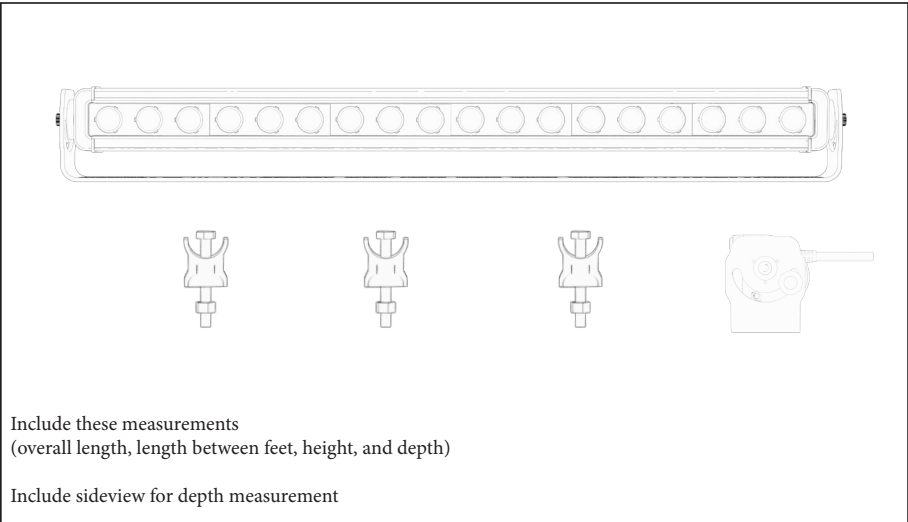


**Warranty Information: Full policy available Online at [www.hivizleds.com/warranty](http://www.hivizleds.com/warranty)**

- Proof of purchase may be required to validate warranty. All FireTech products are warranted for the useful service life of the vehicle for which they were first installed
- Improper installation, accident, physical damage, neglect, and normal wear and tear are not covered under warranty
- Lights operated in environments over 150° Fahrenheit are not covered under warranty
- All advance-exchange warranty claims must be validated with HiViz Technical Support prior to issuance of a shipping label. Failure to return defective product will result in an invoice for the full replacement value of the product
- HiViz Lighting will repair or replace defective product at its discretion. Replacement product will be in similar or better cosmetic condition than the defective part
- Warranties should be handled through the dealer/reseller the product was purchased from; customer is responsible for delivery
- If product is found to have damage not covered under warranty, customer will be responsible for return shipping charges and/or cost of repair
- Non-warranted items can be repaired at the customer's expense of parts and labor, at the discretion of HiViz LED Lighting, who will provide an estimated repair cost before proceeding with the repair



# MINIBROW TRUNNION: WHAT'S INCLUDED



## PIECES INCLUDED

- 1** Minibrow light
- 2** Center Drop-in Pedestal Mounting feet (Quantity depends on length)
- 3** End Piece Drop-in Pedestal Mounting feet (Quantity 2)
- 4** Wiring Harness "Whip"
- 5** Allen Wrench

## TOOLS REQUIRED

- 10mm Wrench or Socket
- "D" size or 1/4" Drill Bit
- Measuring Tape
- Basic Automotive Wiring Supplies

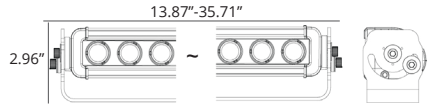
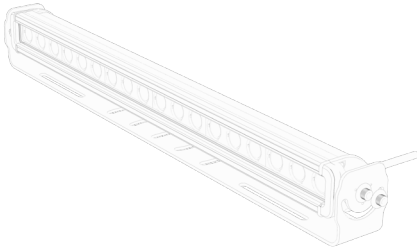
**Notice:**  
Use hand-tools to tighten all hardware.  
Use of power tools will cause permanent gauling and seizure of hardware.



# TECHNICAL SPECIFICATIONS

## TRUNNION MINIBROW

ITEM #	ACTUAL LENGTH	WATTS	AMP DRAW
FT-MB-9-TR-**-*	13.87"	45	3.75
FT-MB-12-TR-**-*	17.65"	60	5.0
FT-MB-18-TR-**-*	25.20"	90	7.5
FT-MB-24-**-*-GWA0011	31.11"	120	10.0



## CONFIGURATION INFORMATION

### CONFIGURE PART #

LEDS      BEAM | HOUSING  
 ↓           ↓           ↓  
 FT-MB-   -TR-   -   -  
           9        S        B  
           12        F        W  
           18  
           24

EXAMPLE CONFIGURATION

↓  
**FT-MB-12-TR-S-W**  
 MINIBROW - 12 LED - TRUNNION  
 SPOT - WHITE

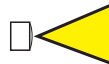
\* ADD "-W" OR "-B" TO DENOTE WHITE OR BLACK HOUSING  
 \*\* SPECIFY SPOT, FLOOD, OR FIRETECH OPTICS

### AVAILABLE BEAM PATTERNS

S=SPOT  
 LONG DISTANCE



F=FLOOD  
 AMPLE COVERAGE



FT=FireTech Optics  
 BEST OF BOTH

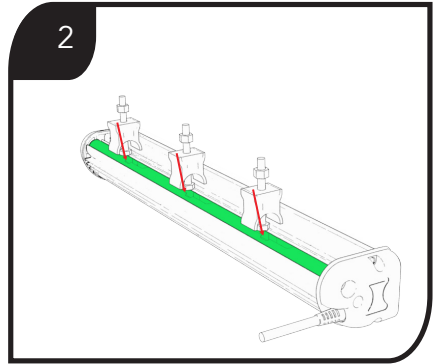
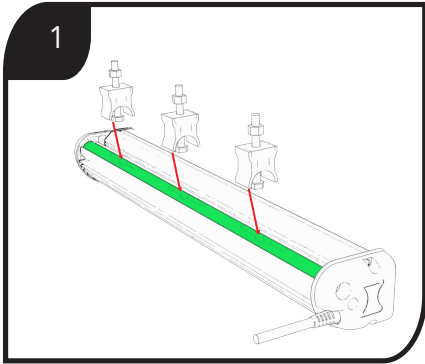


### HOUSING COLOR OPTIONS

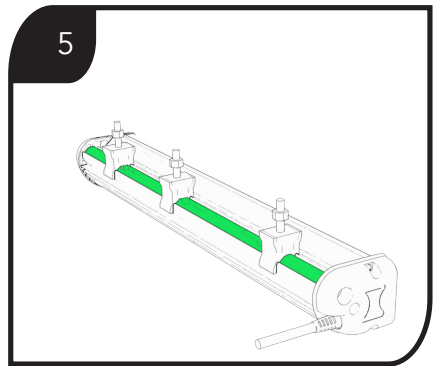
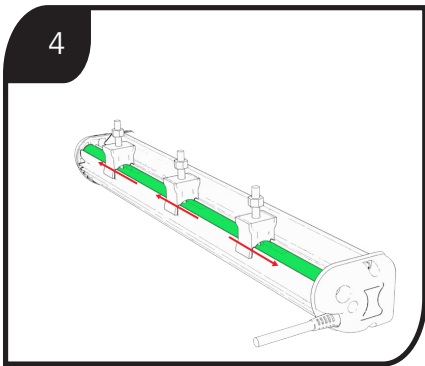
W=WHITE  B=BLACK



# OLD SYSTEM



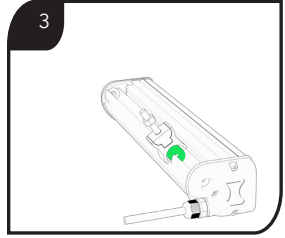
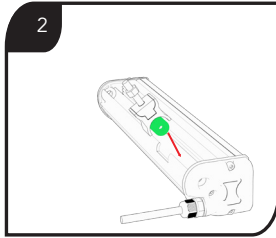
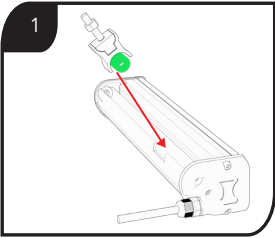
**Steps 1-2:** Align feet with hole in extrusion. Drop into place so the they latch to extrusion.



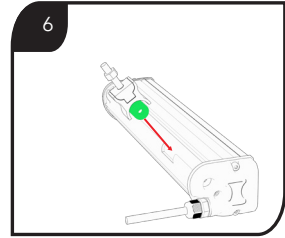
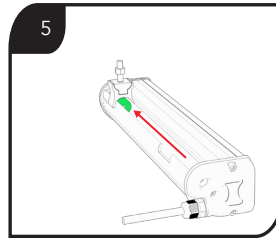
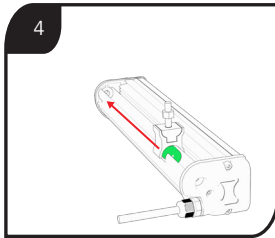
**Steps 3-4:** Then slide each foot to the outermost edge of the extrusion. (Left foot to far left side of hole, Right foot to far right side of hole, and the middle foot to either edge of the middle hole.)



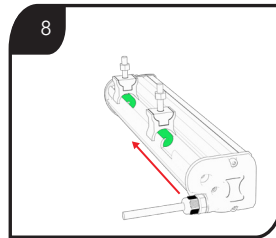
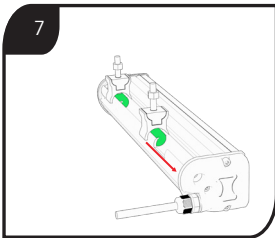
# NEW SYSTEM



**Steps 1-3:** Begin by Lining foot up with gap, angle so that it drops in, and latches to extrusion.



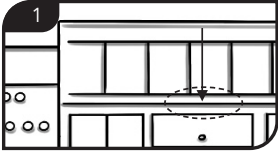
**Steps 4-6:** Once in place and gripping the extrusion, slide foot to the end of the bracket.



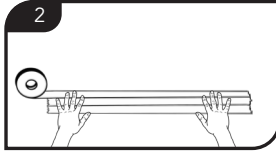
**Steps 7-8:** Repeat process with next foot.



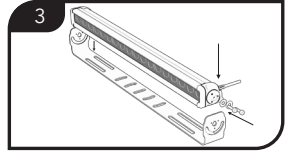
# INSTALLATION INSTRUCTIONS



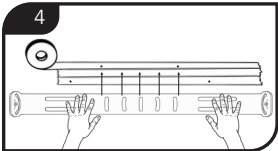
1 Plan the installation location on the apparatus. Choose a mounting location free of obstructions, and with a clear pathway for electrical wiring.



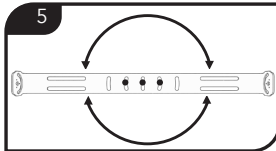
2 Apply a layer of masking tape on the surface where the light will be installed.



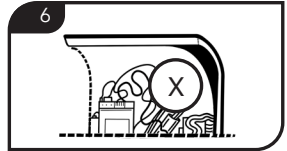
3 Remove hardware from end cap and separate light from bracket. Set light aside.



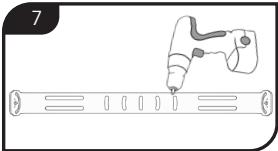
4 Hold bracket to taped surface from step 2 and mark all slots with a sharpie.



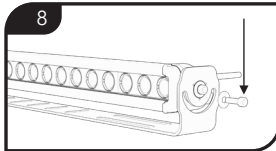
5 Note, mounting using the center 3 holes will allow you to rotate the fixture along the center axis



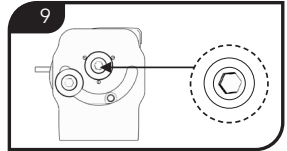
6 Check area under/behind fixture for any wiring or obstructions prior to drilling holes!



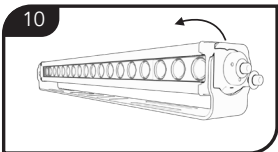
7 Drill mounting holes and attach hardware to secure bracket to apparatus body.



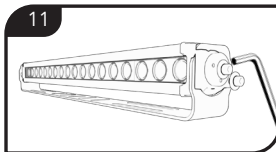
8 Once the bracket is installed, reinstall the light fixture in the trunnion bracket. Insert the middle bolts in first and tighten with fingers, snug up using the Allen wrench if needed to prevent flopping around.



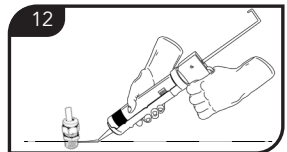
9 Install the second bolts as shown in the diagram, finger tight.



10 Make new picture: Aim light so that the center of the beam projects into the center of the intended work area.



11 Once aimed, tighten hardware using included allen wrench.



12 Drill hole to pass wiring through vehicle body, install a cable gland, grommet, or other wire passage and seal wire passage. Seal all hardware and wire passages with RTV silicone.



# WIRING INFORMATION

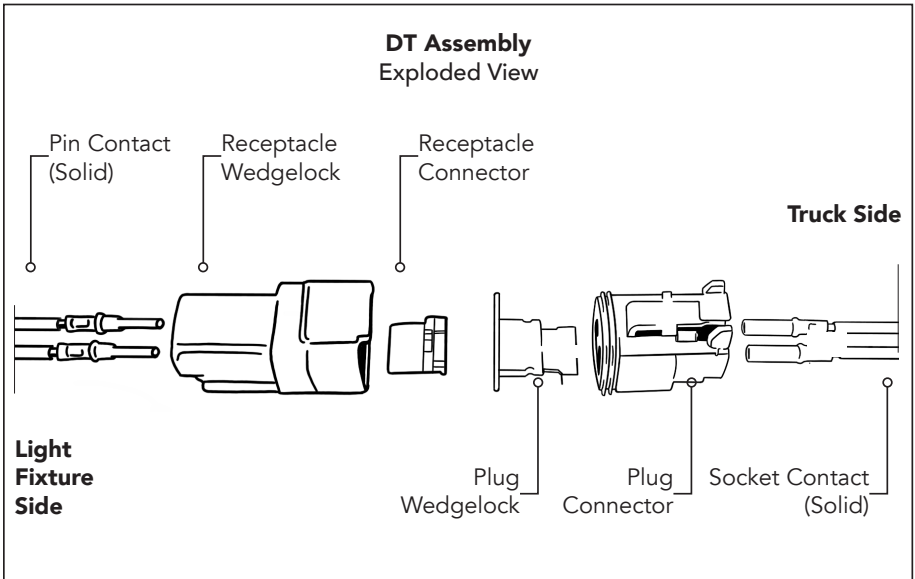
**1. Wiring:**

- The 3 pin variety is red, black, and yellow)
- The 2 pin variety is red and black)
- The black wire is always ground
- The yellow wire and the 2 red wires will be 12 volts each

**2.** One of the red wires will be spot, flood, or scene, the other red will be the other spot, flood, or scene. One yellow wire is for marker lights, the other yellow is the other of the 3 circuits

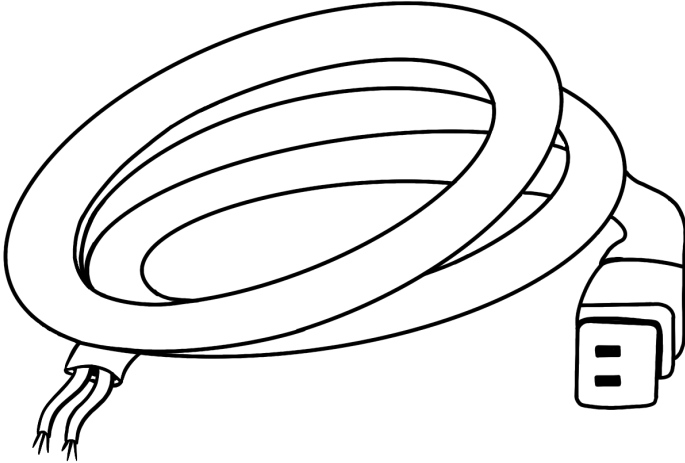
**3.** When installing, you can tap **12 volts** to each of the wires to see what part lights up and to see what happens

**4.** Both black wires need to be hooked up to ground



# REPLACEMENT PART

Deutch "whip"



# REFERENCES



For additional information, please visit [hivizleds.com](http://hivizleds.com)



Trunion MiniBrow  
Product Page





**HiViz LED LIGHTING**  
HiViz Lighting, Inc  
Phone: 703-662-3458  
Email: [firetech@hivizleds.com](mailto:firetech@hivizleds.com)  
PO Box 565, Naples, NC 28760